

## ROTEX GS 24 AL-H L=30 2.6 20(H7) KTR CLUTCH WHEEL HUB UNIT



New KTR ROTEX GS 24 AL-H L=30 2.6 20(H7) PIASTA  
 Tested and cleaned.  
 24 months guarantee  
 Dedicated courier  
 Delivery across Europe even in 15855

### TECHNICAL DATA

MANUFACTURER	KTR
MODEL	ROTEX GS 24 AL-H L=30 2.6 20(H7) PIASTA
CATEGORY	Couplings
WEIGHT [KG]	1.0



24/7 SUPPORT AVAILABLE  
[+48 71 750 09 78](tel:+48717500978)



WRITE TO US  
[info@rgbelektronika.pl](mailto:info@rgbelektronika.pl)

### TEST STAND



We have test stands developed by us, thanks to which we check whether the device is in working order. It is with these posts that we test the repaired device, for which we give 24 months warranty, and you can be sure that your **ROTEX GS 24 AL-H L=30 2.6 20(H7) PIASTA** equipment has been repaired at a service center that provides the highest quality services

### PRODUCTS FROM THE RGB ELEKTRONIKA OFFER:

#### HIGHEST QUALITY



Each product undergoes a specialized assessment, based on which we select the best quality equipment to guarantee their trouble-free operation. Thanks to this, you can be sure that the KTR ROTEX GS 24 AL-H L=30 2.6 20(H7) PIASTA device has been prepared with the greatest care.

#### EXPRESS SHIPPING

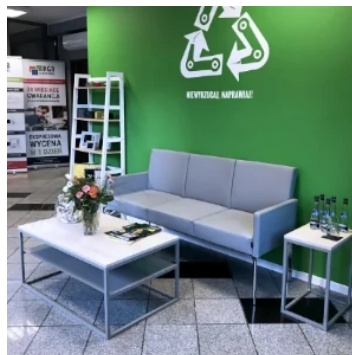
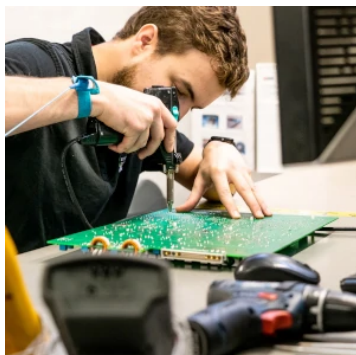


We send products from our warehouse the same day the order was placed. We also send a dedicated courier on request. You can be sure that your KTR ROTEX GS 24 AL-H L=30 2.6 20(H7) PIASTA will reach you as soon as possible.

#### 24 MONTHS GUARANTEE



All used products are covered by our 24 months warranty! This means that the KTR ROTEX GS 24 AL-H L=30 2.6 20(H7) PIASTA device you purchased will be repaired by us under warranty for 2 years, and you can be calm about the smooth flow of your business.



## COOPERATION WITH RGB ELECTRONICS IS:

### QUICK SUPPORT



At RGB Elektronika, we understand that every minute counts in an emergency. Choose **KTR ROTEX GS 24 AL-H L=30 2.6 20(H7) PIASTA** from our offer and we will deliver them to you even the same day. Thanks to the express cooperation with our company, your company will be able to operate without downtime!

### OWN SERVICE



We repair devices on our website in Wrocław. We have the most modern equipment supported by experienced technicians. These independent activities help us to work faster and maintaining the highest quality of services. You can be calm about the efficiency of **KTR ROTEX GS 24 AL-H L=30 2.6 20(H7) PIASTA**.

### REPAIR HISTORY



On request, we can attach a repair history to **KTR ROTEX GS 24 AL-H L=30 2.6 20(H7) PIASTA**. Thanks to this, every customer can see which elements have been replaced and which tests we have subjected to. At RGB Elektronika, we value honesty. We want our clients to trust us and be satisfied with the equipment purchased from us.

### TRANSPORT SAFETY



You don't have to worry about damaging **KTR ROTEX GS 24 AL-H L=30 2.6 20(H7) PIASTA** during transport. We know how important it is to safely deliver a product to the customer. Thanks to many years of cooperation with UPS, we have developed innovative ways of securing devices in transport. We use three types of packaging for shipped devices: wooden box, instapak, dedicated pallet.

### DO YOU KNOW WHAT TO DO WHEN A DAMAGED SHIPMENT WILL BE DELIVERED TO YOU?



Report damaged parcel to us within 7 days. You can do it by sending us an e-mail message: [biuro@rgbelektronika.pl](mailto:biuro@rgbelektronika.pl) or by calling our hotline: +48 71 325 15 05.



Take a picture of the damaged package and attach it to the email. Do not dispose of the packaging, invoice and shipping documents!



Don't worry about anything, we'll take care of everything. We will arrange a courier who will come to write you a damage report.



We will inform you about each stage of the complaint procedure.



You can count on us - we will take care of everything for you!

### LET'S STAY IN CONTACT



RGB Elektronika  
spółka z ograniczoną odpowiedzialnością sp. k.  
Jana Długosza 2-6  
51-162 Wrocław  
Poland

☎ [24/7 +48 71 750 09 78](tel:+48717500978)

✉ [info@rgbelektronika.pl](mailto:info@rgbelektronika.pl)

